



# MAGNI INDUSTRIES, INC.

2771 Hammond Street Detroit, Michigan 48209-1239

Phone: (313) 843-7855 Fax: (313) 842-6730

November 11, 2002

Rhinehart Finishing  
Mr. Don McDaniel  
5345 County Road 68  
Spencerville, IN 46788

Dear Mr. McDaniel:

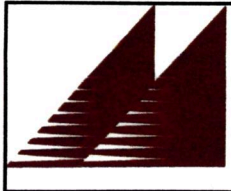
As you are aware, Magni Industries has the authority to approve licensees that supply their materials to the non-automotive industry. Based on extensive corrosion testing at our facility, we recognize Rhinehart as an approved applicator of the Magni 550 and 555 system.

If there is anything else you need, please do not hesitate to call.

Best Regards,

Tim Ogonowski  
Technical Sales Manager  
Magni Industries, Inc.

cc: Matt Herbster



# MAGNI INDUSTRIES, INC.

2771 HAMMOND DETROIT, MICHIGAN 48209-1239  
PHONE (313) 843-7855 FAX (313) 842-6730

<b>Process Specification:</b>	AM General/ Ford S426 and 427	<b>Report Date:</b>	11/11/02
<b>Part Description:</b>	Test panels	<b>TS Number:</b>	618 and 619
<b>Project:</b>	Rhinehart Validation	<b>Licensee:</b>	Rhinehart Finishing
<b>Tests to be performed:</b>	Salt spray	<b>Submitted By:</b>	Kris Maciejewski

## In Testing Observations:

### Comments

Samples were processed at Rhinehart Finishing on September 17, 2002. This trial run was for initial validation of Rhinehart Finishing by Magni Industries. All samples were sprayed. Two Magni systems were tested- Magni 550, which is B17A over zinc and yellow dicromate plating, and Magni 555, which is B06J and B17A over zinc-phosphate pretreatment (TTC 490).

Testing was performed to the corrosion requirements outlined in the Ford S426/ 427 specifications.

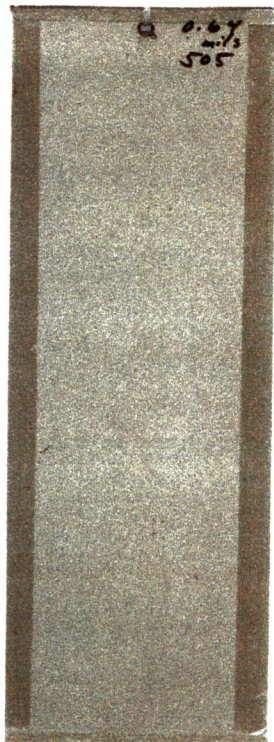
The dry film thickness on the 550 panels ranged from 0.64-.92 mils. All samples passed 1000 hours of salt spray with no red rust or white corrosion. The 555 panels ranged from 0.9 - 1.30 mils total dry film, base and topcoat. These samples also

passed 1000 hours of salt spray testing with no red or white corrosion. Photos of the high and low film thickness samples for each system follow below.

### Photos



550 High film



550 Low film



555 High film



555 Low film